

an invitation to visit...

Join us this spring! The Robert E. Barrett Fishway and the Turners Falls Fishway are staffed by knowledgeable and friendly guides who are available to share information about anadromous fish and restoration efforts. The fishways also offer free educational programs for schools. Reservations for school groups are required.

To make a reservation for a school group tour please contact:

Turners Falls Fishway (800)859-2960
Holyoke/Barrett Fishway (413)536-9474

we love to have guests

The annual migration of anadromous fish is a wondrous thing. It is a fascinating story to hear and even better to witness first-hand. We feel privileged to provide the public with the opportunity to view the “fish run” at both the Turners Falls and Holyoke Dams.



Owner of the
Robert E. Barrett
Fishway in Holyoke, MA

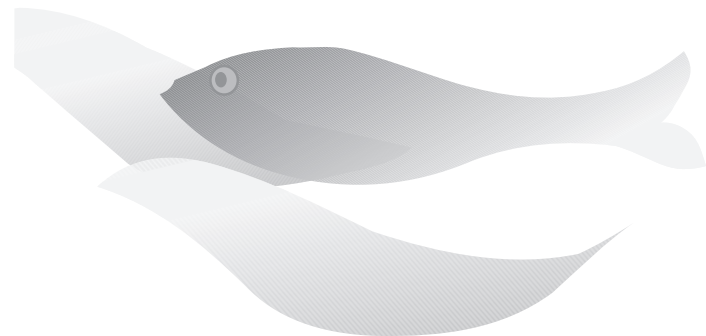


Owner of the
Turners Falls
Fishway



GDF SUEZ

an invitation to visit...



the fish lifts and ladders
on the Connecticut River
in Massachusetts

- ▶ Robert E. Barrett Fishway, Holyoke
- ▶ Turners Falls Fishway, Turners Falls

spring journey

Each spring when the shad bush blooms, New Englanders have the opportunity to view an incredible natural phenomenon. American shad, sea lamprey, Atlantic salmon and other anadromous fish swim up the Connecticut River as they begin their annual spring migration. These fascinating fish are born in the river and its tributaries but live most of their lives in the ocean. Driven by instincts as old as time, adult fish return to spawn in the rivers of their birth.

free and fun for all ages

FirstLight Power Resources and Holyoke Gas and Electric's fishways on the Connecticut River help migrating fish over their dams. Underwater viewing windows at the fishways provide a window on the river for everyone to enjoy. Don't miss one of the most amazing natural history events taking place in our own backyard.

THE TURNERS FALLS FISHWAY

located in Turners Falls and owned by FirstLight Power Resources

FirstLight Power Resources has three fish "ladders" that help fish over the Turners Falls dam. These stairlike ladders consist of a series of pools, each approximately one foot higher than the last. The fish climb the ladders by swimming from pool to pool. The underwater viewing windows offer visitors a chance to see shad, lamprey and other fish as they continue upriver to spawn.

Turners Falls 2010 Schedule

Open May 15 through June 20
Wednesday - Sunday • 9:00 a.m. - 5:00 p.m.

visit our website:
www.firstlightpower.com/stewardship/fish.asp

Directions

Traveling south or north on Rte. 91:

take exit 27 for Rte. 2 east (Greenfield/Boston). Take a right at the second light and go over the bridge. Turn left onto First Street. The fishway is on the left.

Traveling west on Rte. 2:

travel 9½ miles beyond Erving Center and turn left at the first light. Go over the bridge and turn left onto First Street. The fishway is on the left.

THE ROBERT E. BARRETT FISHWAY

located in Holyoke and owned by Holyoke Gas and Electric

The Barrett Fishway was the first and most successful fish lift on the Atlantic coast. It consists of two elevators or "lifts" which carry migrating fish up and over the Holyoke dam. Visitors can watch the lifts in action from an observation deck overlooking the Connecticut River. After the fish are lifted, visitors can witness their migration as they swim by the viewing windows and continue their upriver journey.

Holyoke 2010 Schedule

Open May 5 through June 13
Wednesday - Sunday • 9:00 a.m. - 5:00 p.m.

visit our website: www.hged.com/fishlift

Directions

Traveling north or south on Route 91:

Take exit 17 (Rte. 141 Holyoke Center/South Hadley) and follow signs to Rte. 141 East towards Holyoke. Stay on Rte. 141, bearing right at the second set of lights. Continue on Rte. 141 for six more lights, turning left at the 6th onto Main Street (Rte. 116N which turns into Canal St).

Once on Main Street/Route 116 North there are detour signs. Continue past the first detour sign (Local Traffic Only/Truck Detour) and follow detour signs until you return to Rt. 116. Turn left at the fishway sign just before the South Hadley Falls Bridge.

Traveling south on Rte. 116:

Cross the South Hadley Falls Bridge. Take an immediate right into the fishway entrance.